



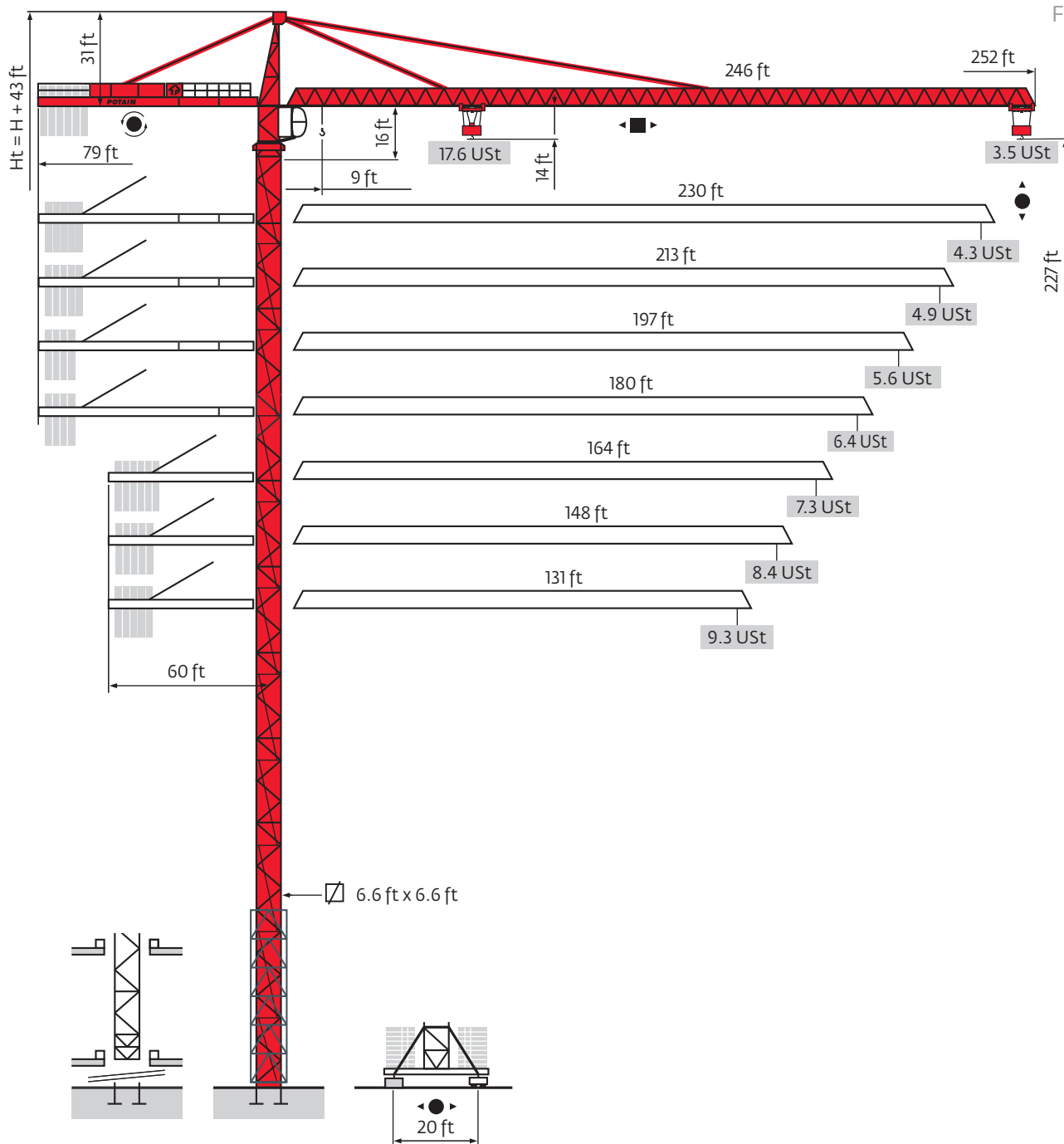
Grove Manitowoc National Crane Potain



Potain MD 365 B L16

Data Sheet

FEM 1.001-A3

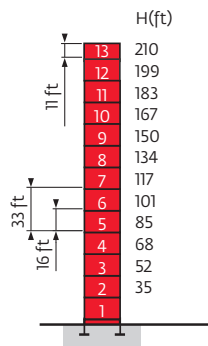


Values have been rounded

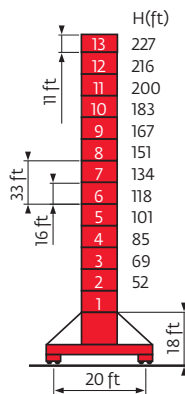


Mast

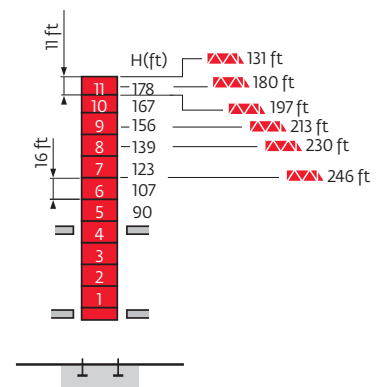
6.6 ft
131 ft → 246 ft



P 62 A

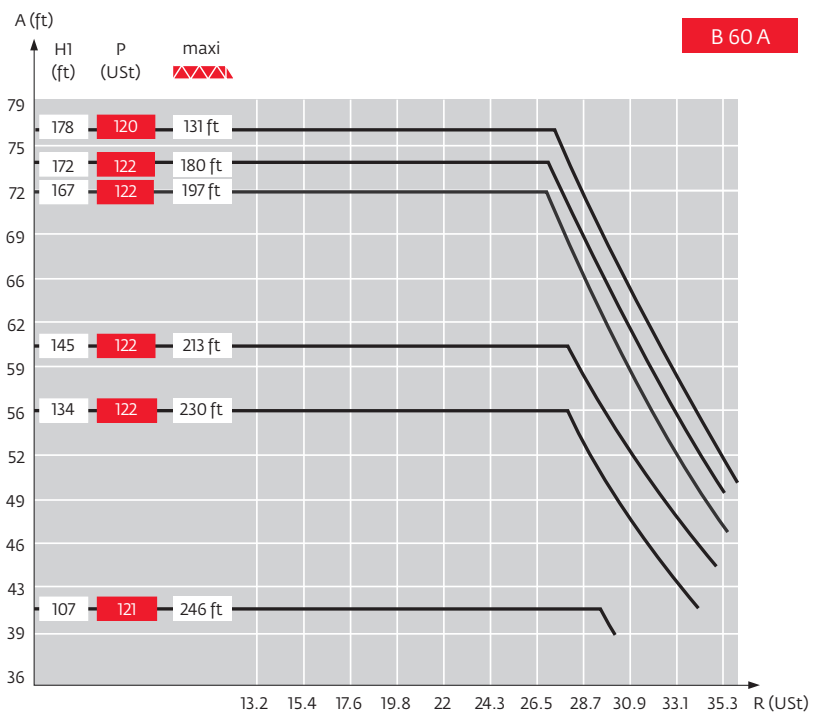
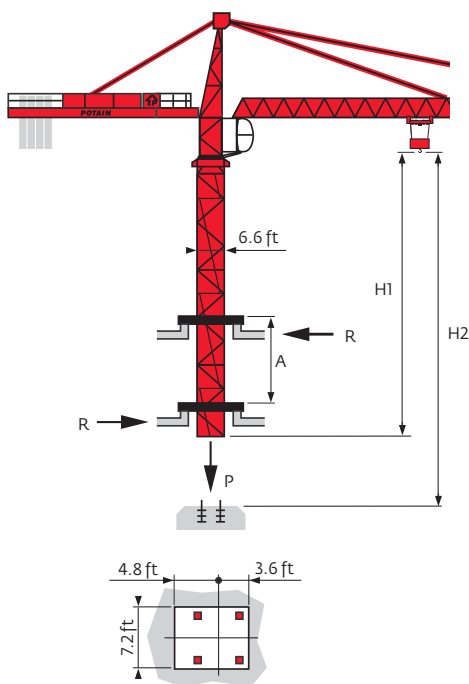


V 60 A



B 60 A

Climbing crane

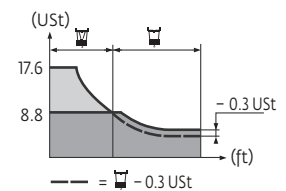
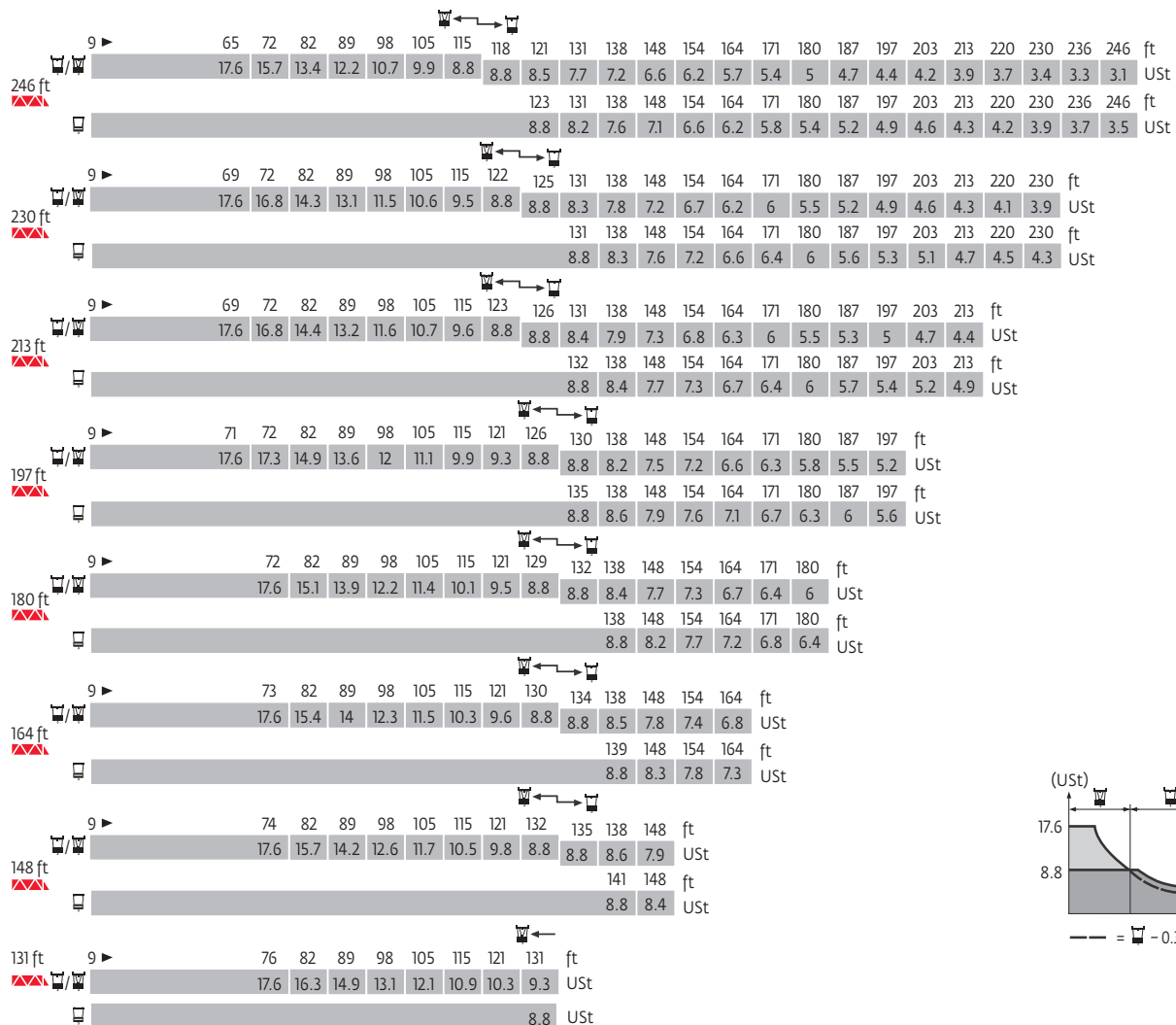


B 60 A

- Ht Traveling maximum height
- A Distance between collars
- H1 Crane height
- P Crane weight (in service)
- R Horizontal reaction

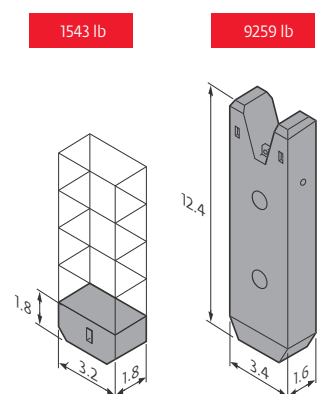


Load charts



Counter-jib ballast

		75 LVF			100 LVF			150 LCC		
		9259 lb	1543 lb	(lb)	9259 lb	1543 lb	(lb)	9259 lb	1543 lb	(lb)
246 ft	79 ft	5	4	52,470	5	3	50,927	5	2	49,384
230 ft	79 ft	5	—	46,297	4	5	44,754	4	3	41,667
213 ft	79 ft	4	3	41,667	4	3	41,667	4	1	38,581
197 ft	79 ft	4	—	37,038	3	5	35,494	3	3	32,408
180 ft	79 ft	3	3	32,408	3	3	32,408	3	2	30,865
164 ft (B60A)	79 ft	3	2	30,865	3	1	30,203	3	—	27,778
164 ft	60 ft	5	5	54,013	5	4	52,470	5	3	50,927
148 ft	60 ft	5	—	46,297	4	5	44,754	4	4	43,211
131 ft	60 ft	4	2	40,124	4	1	38,581	4	—	37,038












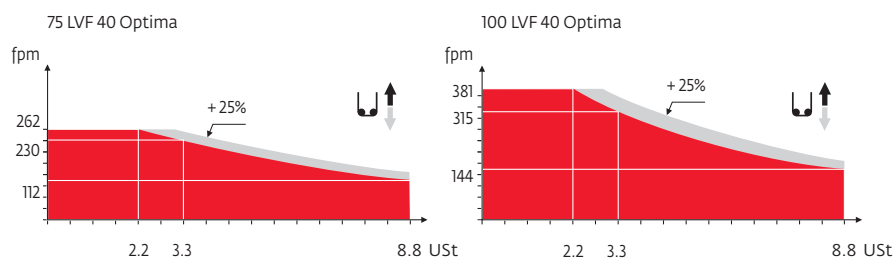
Base ballast






6.6 ft	V60 A	H (ft)	227	216	200	183	167	151	134	118	101	85	69	52
			(USt)	119	119	119	119	119	106	106	106	93	93	93



Mechanisms

																			hp	kW										
	75 LVF40 Optima	fpm	0	→	112	→	144	→	230	→	262	0	→	56	→	72	→	115	→	131	75	55	1814 ft							
		USt	8.8			6.6		3.3		2.2		17.6			13.2		6.6		4.4											
	100 LVF40 Optima	fpm	0	→	144		→	184		→	315		→	381	0	→	72		→	92		→	157		→	190	100	75	3310 ft	
		USt	8.8			6.6		3.3		2.2		17.6			13.2		6.6		4.4											
		150 LCC 40	fpm	223	→	269		→	335		→	446		→	531	112	→	135		→	167		→	223		→	266	150	110	1955 ft
			USt	8.8	6.6		4.4		2.2		1.1		17.6	13.2		8.8		4.4		2.2										
	6 DVF 6	fpm	0→134 (17.6 USt) 0→276 (8.8 USt) 0→328 (4.4 USt)																			5.5	4							
	RVF 182 Optima +	rpm	0 → 0.7																			2 x 12	2 x 9							
	RT 544 A1 2V R ≥ 43 ft	fpm	52 - 105																			4 x 8.4	4 x 6.2							
CEI 38 			IEC 38								kVA																			
480 V (+6% -10%) 60 Hz											75 LVF : 100 kVA 100 LVF : 125 kVA 150 LCC : 175 kVA																			



	Hoisting
	Trolleying
	Slewing
	Traveling
	Consult us

Constant improvement and engineering progress make it necessary that we reserve the right to make specification, equipment and price changes without notice. Illustrations shown may include optional equipment and accessories, and may not include all standard equipment.



www.manitowoc.com

Regional Headquarters

Americas

Manitowoc, Wisconsin, USA
Tel: +1 920 684 6621
Fax: +1 920 683 6277

Shady Grove, Pennsylvania, USA
Tel: +1 717 597 8121
Fax: +1 717 597 4062

Europe, Middle East, Africa

Ecull, France
Tel: +33 472 18 2020
Fax: +33 472 18 2000

Asia - Pacific

Shanghai, China
Tel: +86 21 6457 0066
Fax: +86 21 6457 4955

Potain MD 365 B L16
Code 05-007-.5M-409